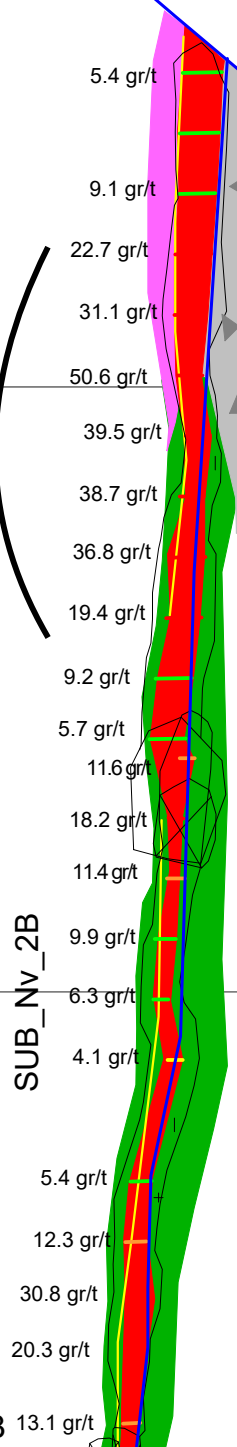


**15m high grade segment averages 34.1 gpt Au, grade ranges from 19.4 to 50.6 gpt Au (seven samples)**

**22 channel samples average 18.7 gpt Au over a ~45m strike length, grade ranges from 4.1 to 50.6 gpt Au**



Ocherous quartz vein with OxFe and channels of breccia

Fault breccia with subangular sandstone and quartzite clasts, matrix with panizo

Rock box of quartz sandstone very fractured

		<b>SIENNA MINERALS SAC</b>
GEOLOGICAL MAP: SUB_LEVEL 2B Assay Au		
Scale: 1:250	Date: 17/09/17	